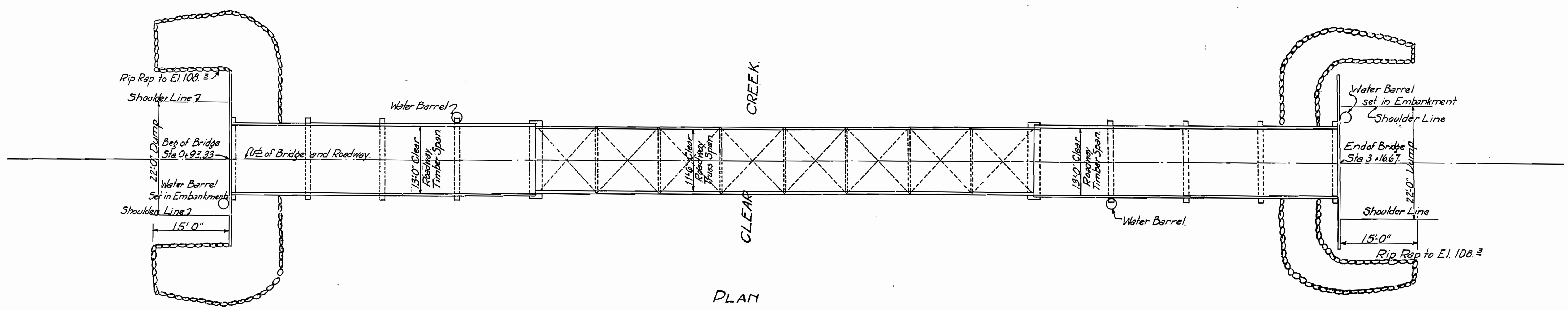


FISCAL YEAR	SHEET NO.	TOTAL SHEETS



GENERAL NOTES.

Masonry Piers and Footings to be of roughly squared stones laid in Portland Cement Mortar. See Sec 58 of Pamphlet J of Specifications. Masonry Footings to extend above original Ground Line.

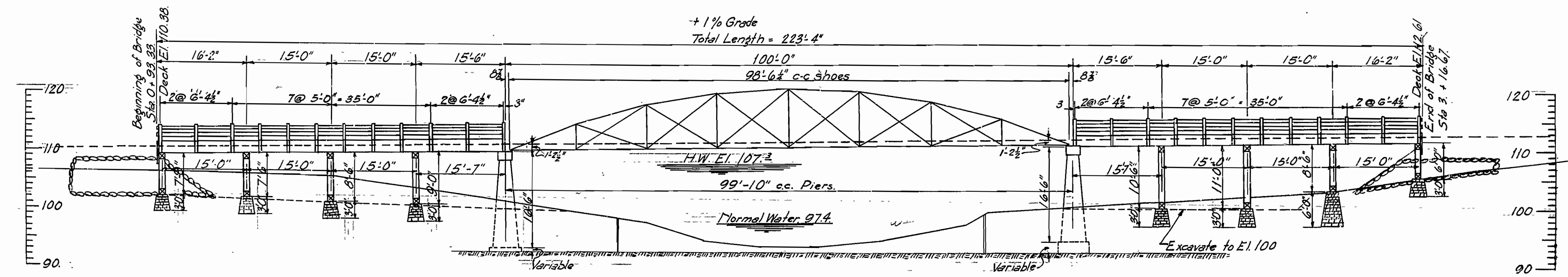
All timber to be untreated. Lengths of posts in bents shown on plans are for purpose of estimating only. Correct lengths are to be determined in the field.

2" Handrail Members are to be given three (3) coats of white lead paint.

100'-0" Truss span to be dismantled, moved from present location and re-erected as shown on plans.

Specifications: Arkansas Standard Road and Bridge Specifications adopted May 30, 1925 and Revised.

Rip Rap: See Specifications.



ELEVATION.

Test Hole No. 1.
Gr. El. 98.3
Rock El. 92.6
Sta. 1+75

Bench Mark.
El. 100. (Assumed)
Spike in root of 36" Birch
on edge of North Bank of
Stream.

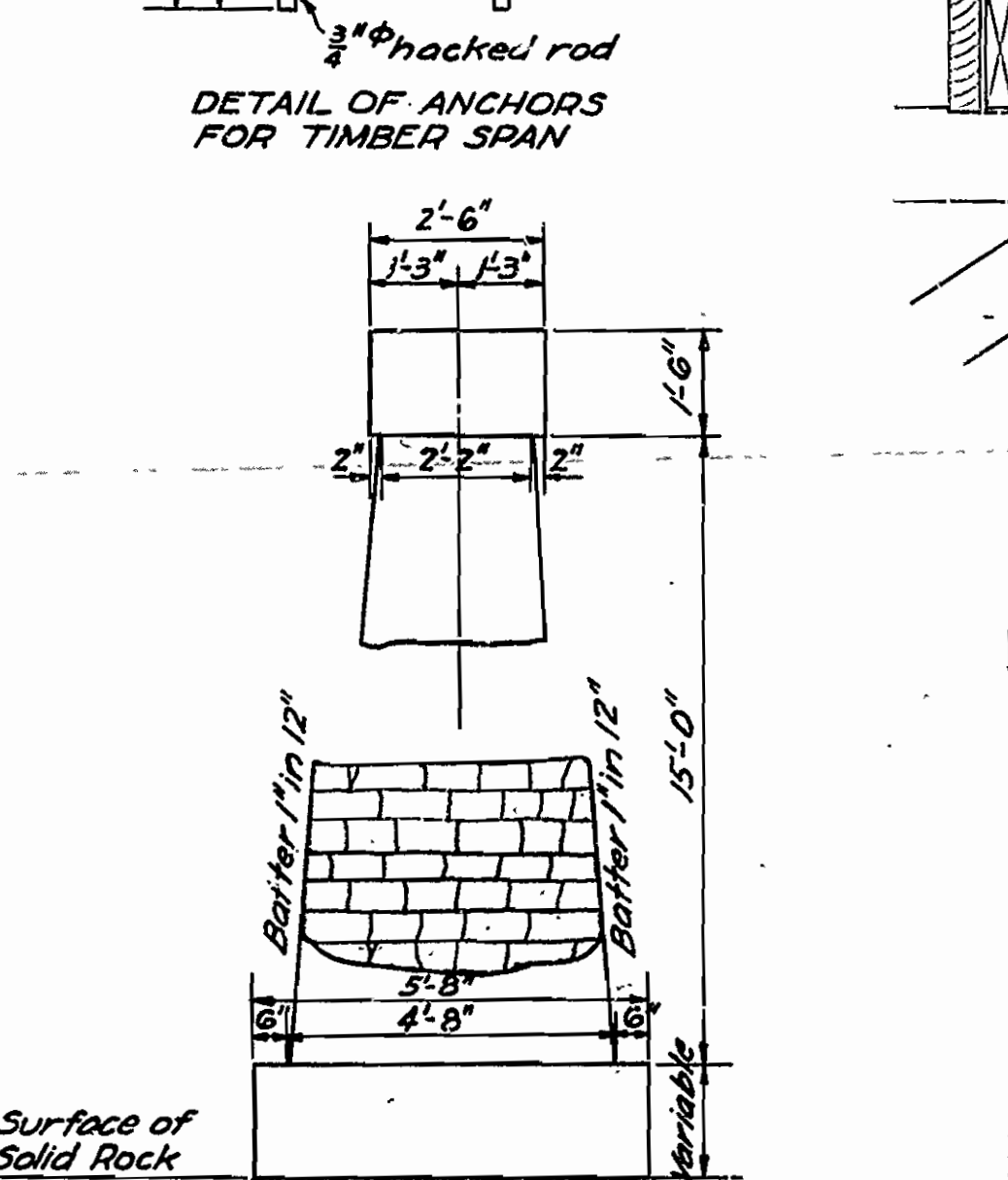
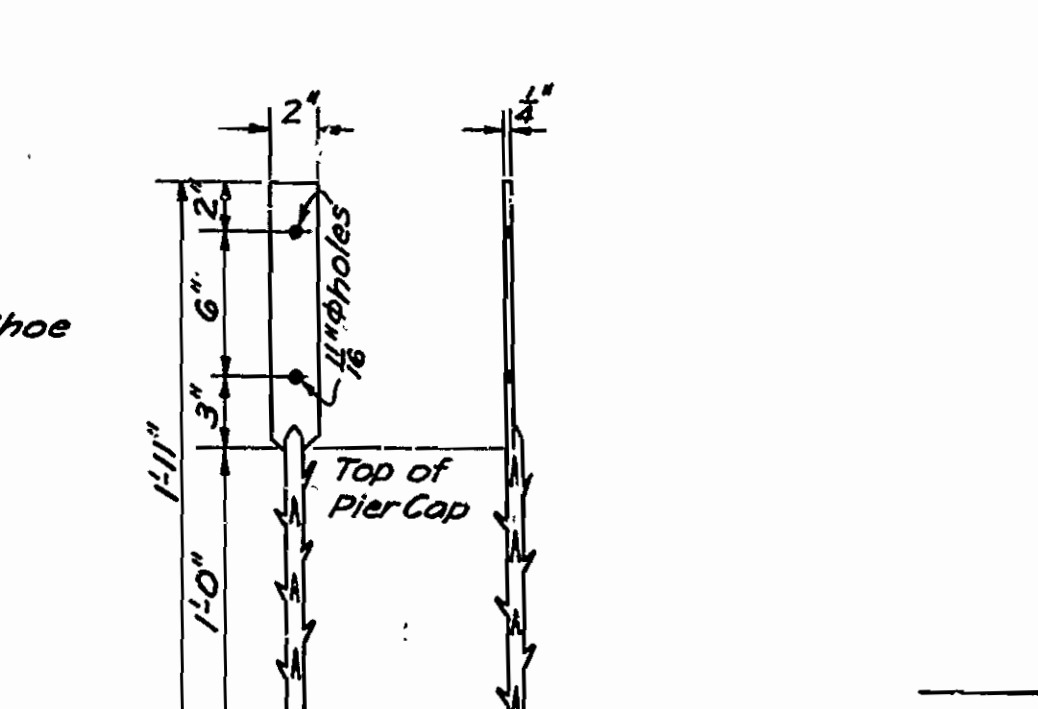
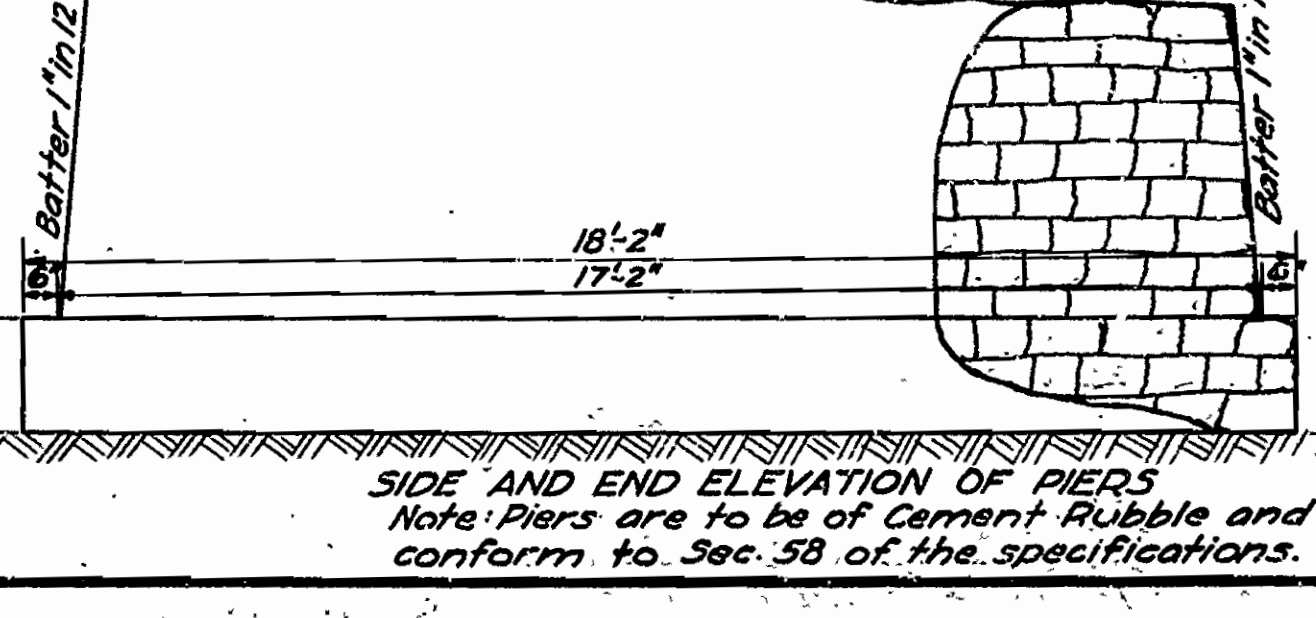
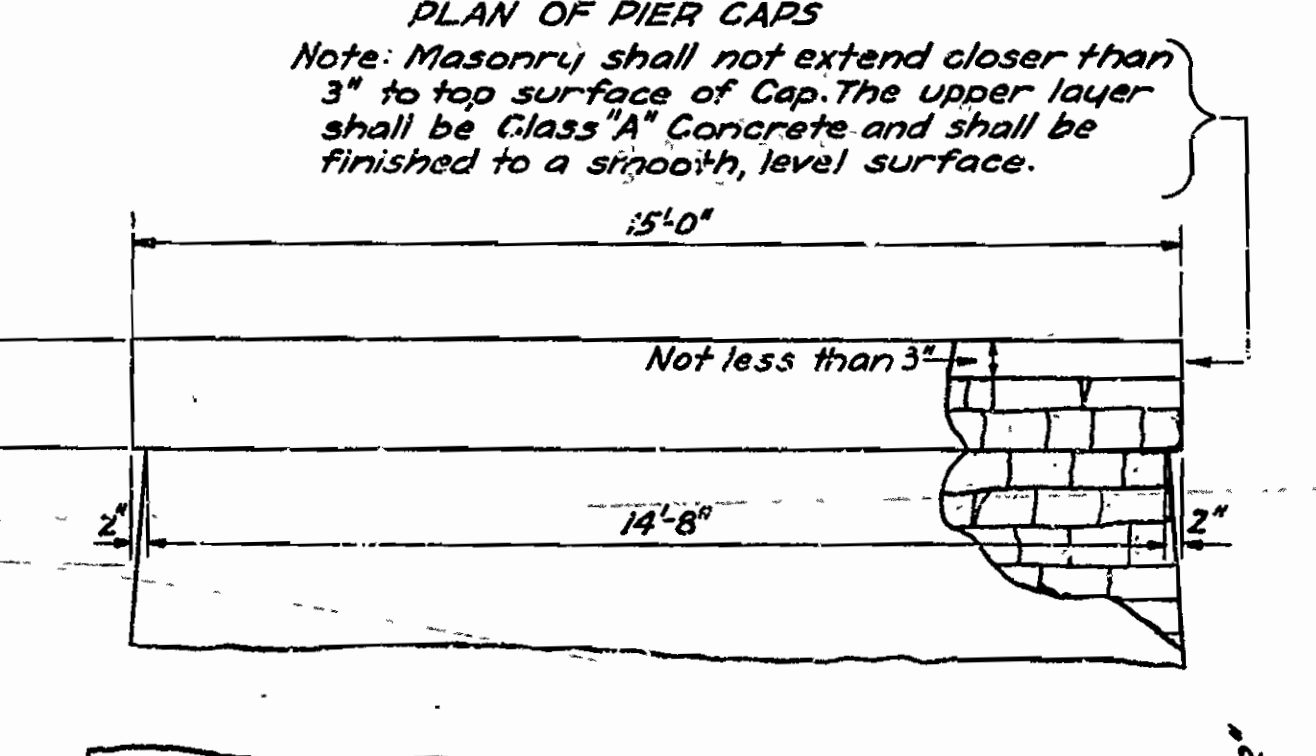
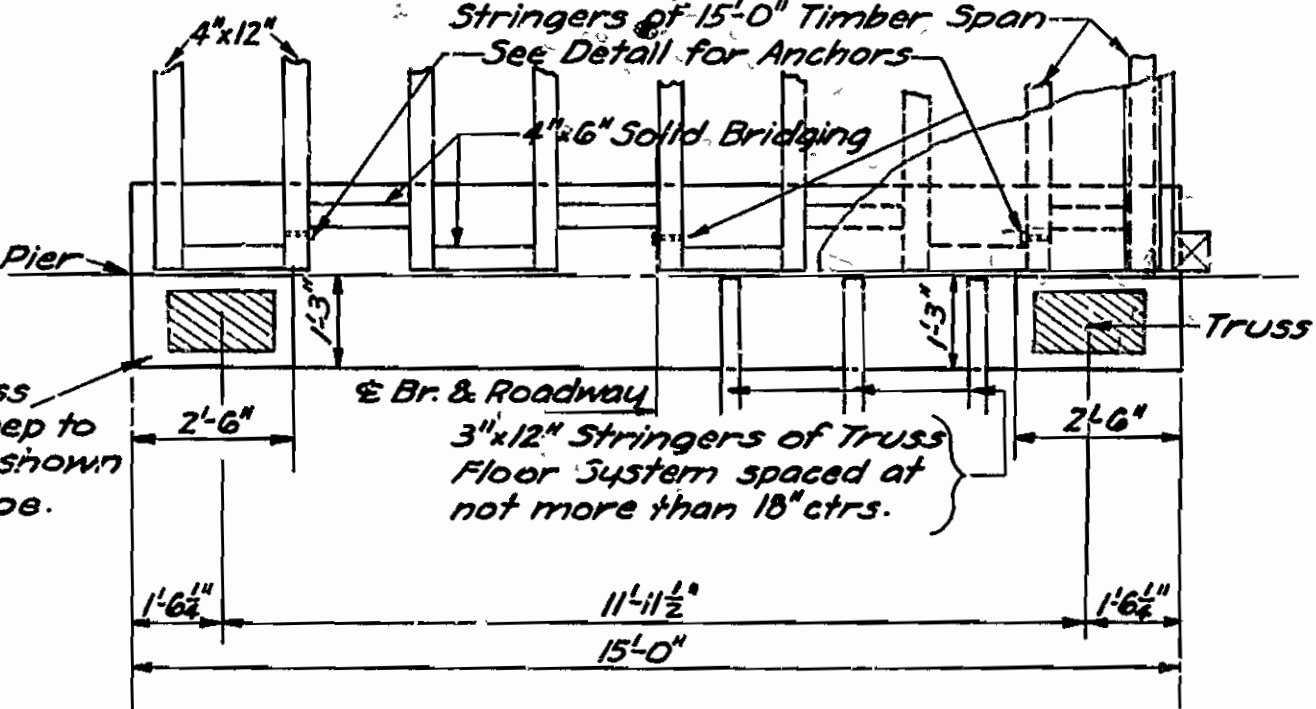
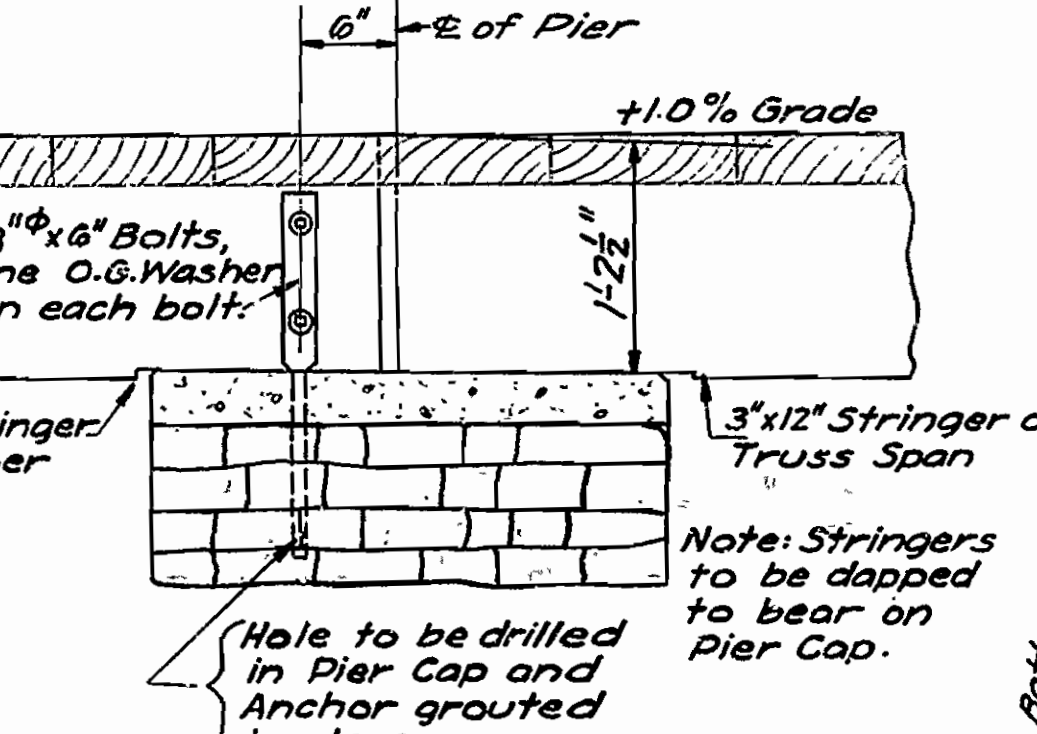
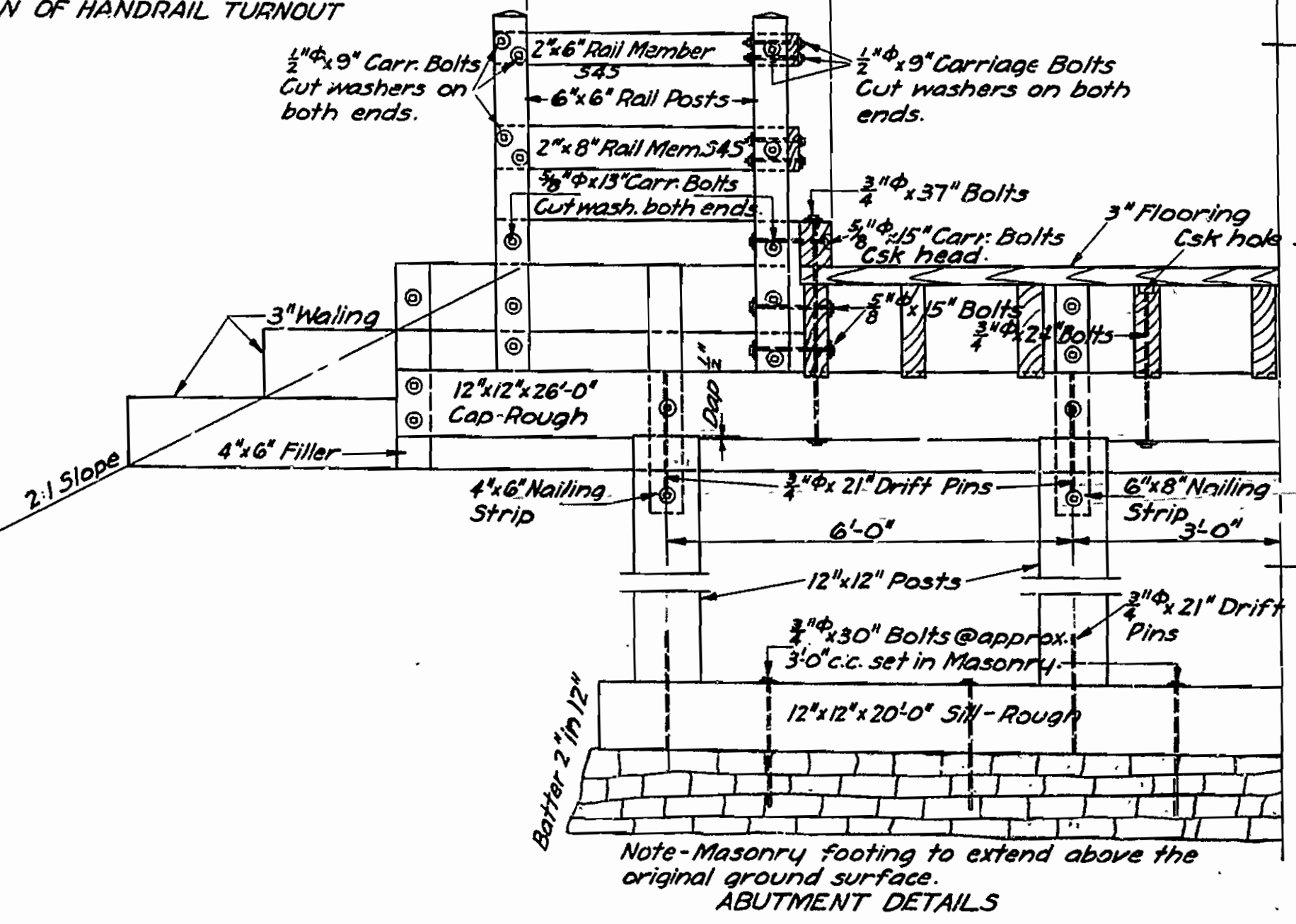
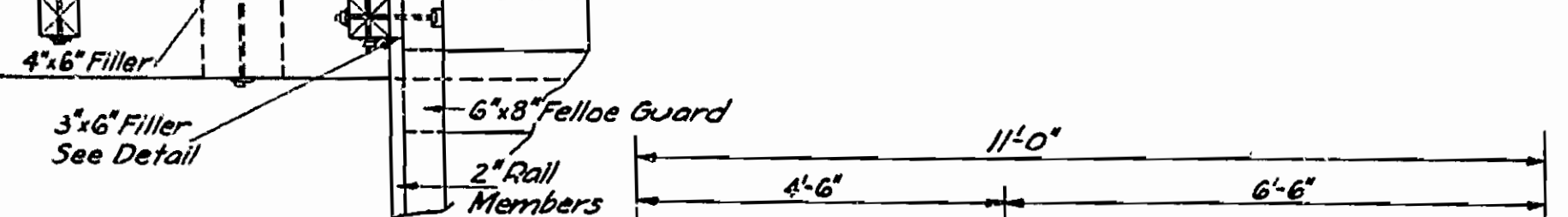
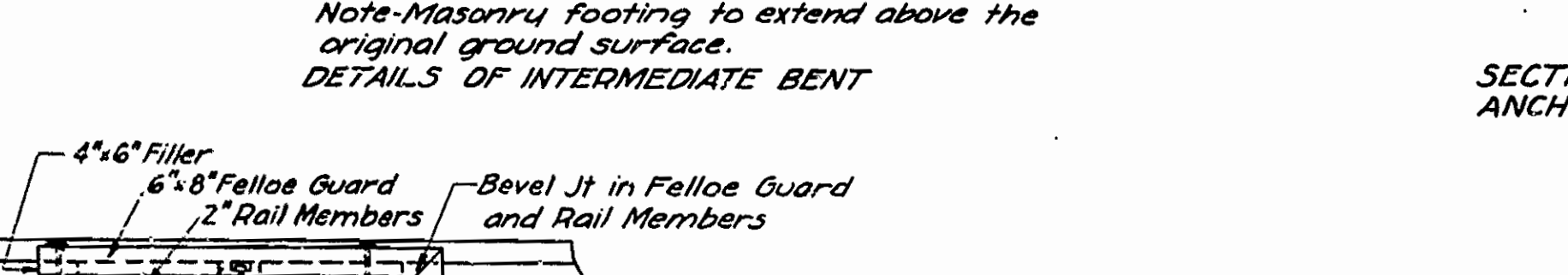
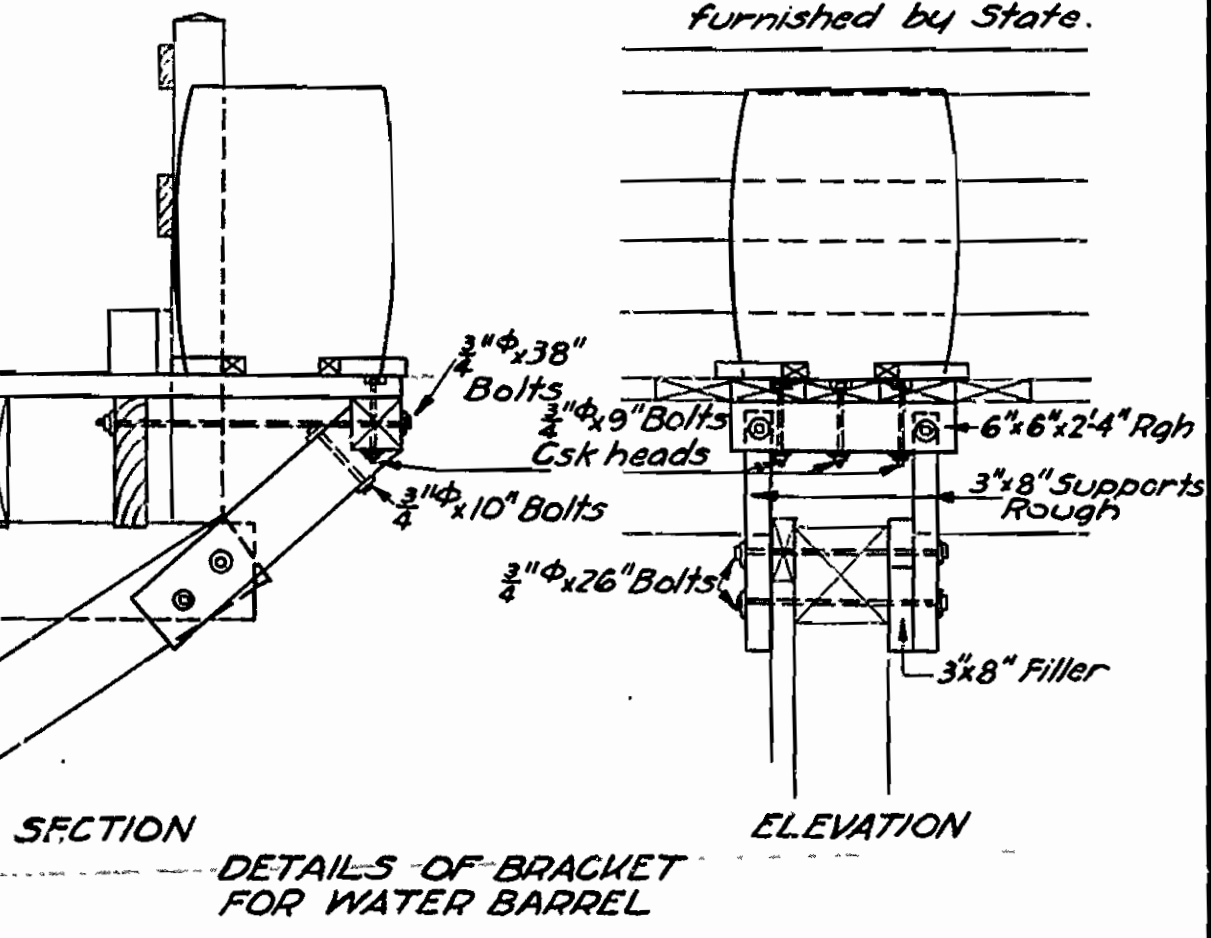
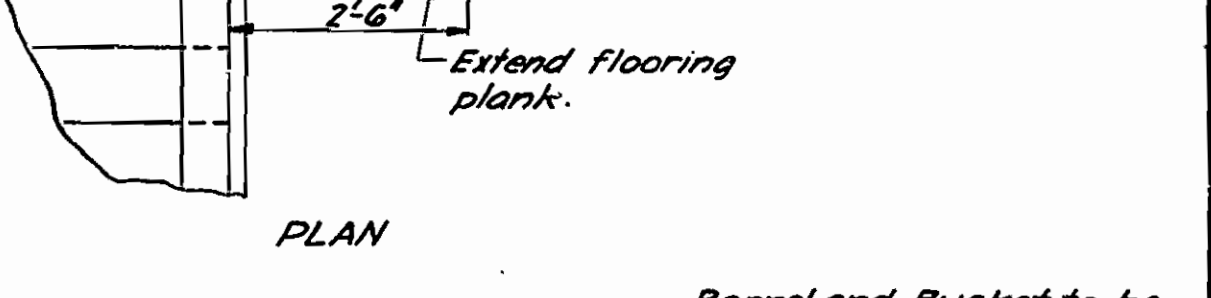
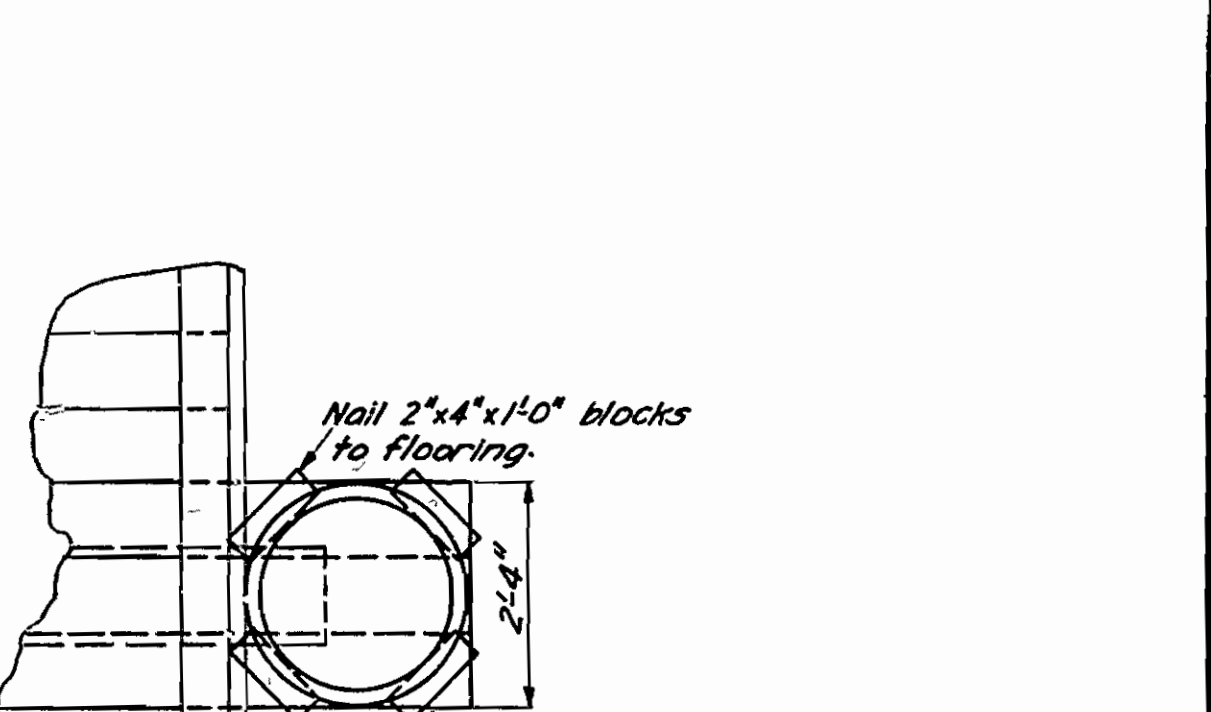
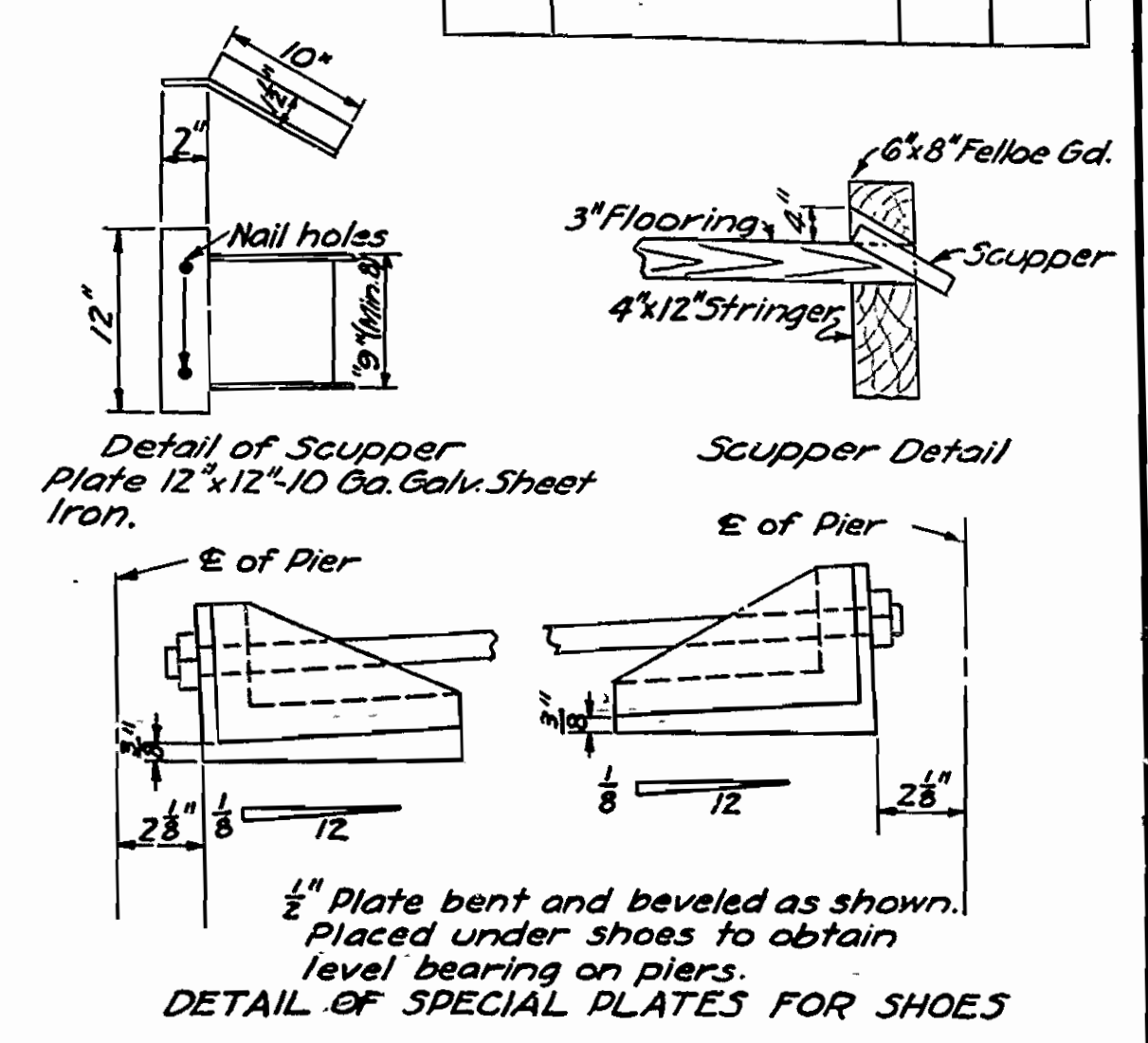
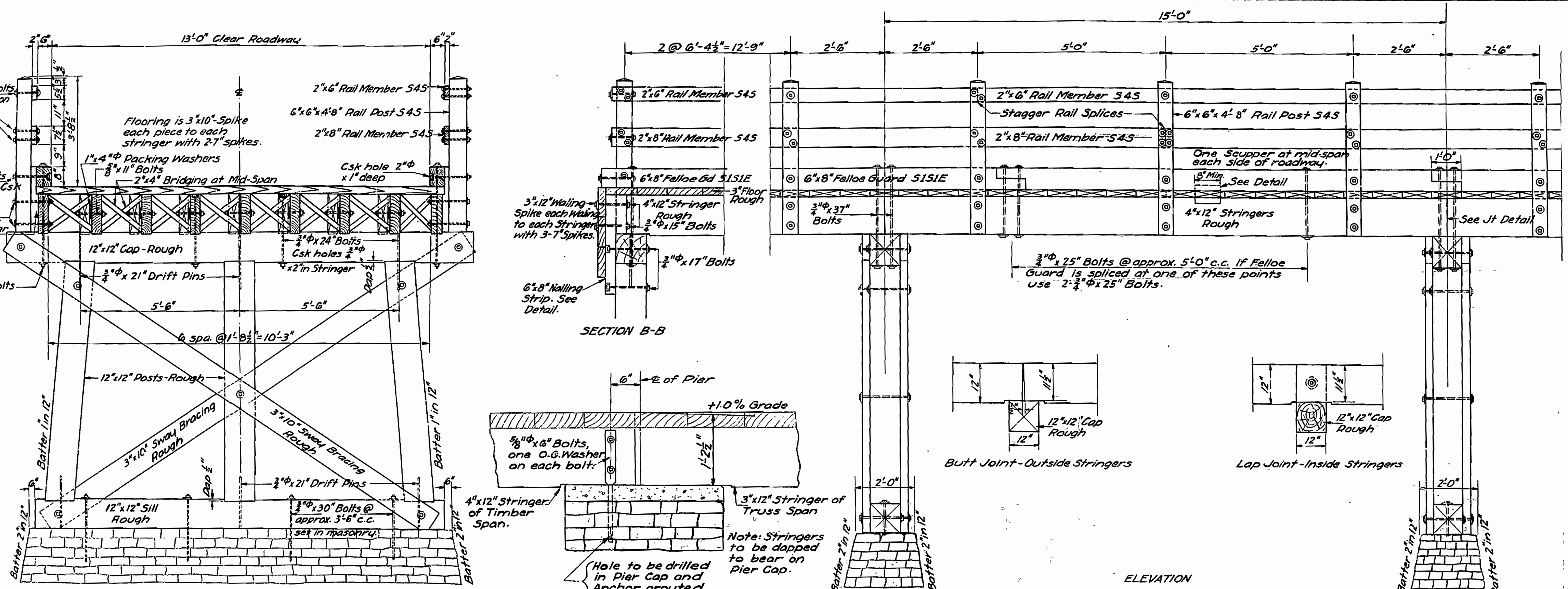
Test Hole No. 2.
Gr. El. 98.5
Rock El. 92.6
Sta. 2+40

LAYOUT OF BRIDGE
OVER
CLEAR CREEK
DOPE COUNTY,
ROUTE 124 SEC.

ARKANSAS STATE HIGHWAY COMMISSION
LITTLE ROCK, ARK.

Drawn By: WOD Date: 10-30
Traced By: F.M.M. Date: 10-28-30
Checked By: Date:
Scale: 1 in. = 10 ft.
BRIDGE NO. 1542. DRAWING NO. 2932

BRIDGE ENGINEER



SIDE AND END ELEVATION OF PIERS
 Note: Piers are to be of Cement Rubble and shall conform to Sec. 58 of the specifications.

DETAILS OF 15'-0" TIMBER TRESTLE & MISCELLANEOUS DETAILS FOR BRIDGE OVER CLEAR CREEK POPE COUNTY ROUTE 124 SEC. ARKANSAS STATE HIGHWAY COMMISSION LITTLE ROCK, ARK.
 Drawn By: W.O.D. Date: 10-27-30
 Traced By: BA Date: 10-29-30
 Checked By: _____ Date: _____
 Scale: _____ in. = ft.
 BRIDGE NO. 1542 DRAWING NO. 2933

BRIDGE ENGINEER